

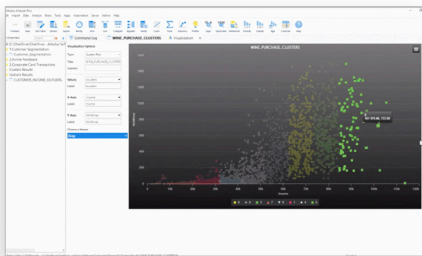
Arbutus 9

AI-Powered Advanced Analytics

Available now!

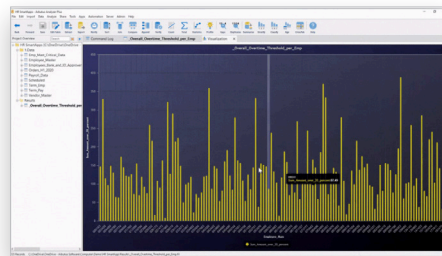
What's New in Arbutus 9

Arbutus 9 features AI/ML analytics for insights, predictions, & advanced analytics, bundled with data security, and user-friendly design. It integrates seamlessly and scales to fit businesses of all sizes.



AI/ML SmartApps

- » Access integrated AI-powered analytics with a click of a button
- » Sentiment Analysis, Cluster, Smart Query, Data Categorization, Outliers



HR SmartApps

- » New analytics suite focused on the Human Resource area
- » Out-of-box interactive data analytics based on best practices



Results Manager (RM) Forms Data Mapping

- » Expanded configuration and control of how results are fed into RM
- » Increased customization and flexibility in data handling

Latest Data Connectors



New Product Announcement

Arbutus DQM

Manage and improve your data quality - Integrated with Arbutus HUB

Strengthen your data quality management processes by embedding Arbutus DQM into one or more of your critical systems.

Key Highlights

- » Can be used for either short-term, project based DQM or as a long-term data quality solution.
- » Assess your data and create your data quality tests with just a few clicks. No coding needed to created advanced data quality tests.
- » Manage and automate data qualify tests to run as often as needed: from once a minute to once a quarter.
- » Easily establish frequency of data quality tests and adjust as needed.
- » Arbutus DQM can be fully integrated with Results Manager. Data quality findings can automatically trigger one or more data quality remediation processes.
- » Manage data quality issues in one place.
- » Easily see trends/patterns in data quality issues over time.
- » Arbutus DQM is an integrated part of HUB
- » System can be up and running up within hours or days.

More Enhancements

Improved User Interface for Data Preview

Easier to see which data source is being previewed in Workflow. Improved formatting of preview data. More intuitive user interface when previewing data in workflow.

Support for SSO

Single sign-on now supported between Analyzer and HUB. Better IT management of server connection and authentication.

Set Default Export Type

Export command automatically uses preferred Export type. Work more efficiently by eliminating manual changes to the Export command.

Data at Rest Encryption

Option to have output files automatically encrypted when using Analyzer Plus (local) or HUB (server). Increased data security and alignment with organizational standards.

Native Connectors for SQL Server and Oracle

Support for native connection to give faster, more secure loading of data. Achieve faster importing of Oracle and SQL Server data.

Export Registry to Profile.txt

Users can now export their server profile information to a profile.txt

Function that Converts DateTime Fields

Converts a datetime value or expression into a character string.

WeekNum Function

Returns week number in a calendar year based on Date field.

Enhanced EOMONTH Function

New +/- months parameter for testing controls that rely on date-based cutoffs.

Improved Directory Command

Simplified use of Directory command without command line syntax.

Support for Multi-Line SQL

Simplified SQL query editing for developers.

Better Control of Append Output

Easier management of Append results location.



Arbutus Analytics

Arbutus delivers the very best in purpose-built audit analytics technology to meet the exacting demands of today's business environment. Auditors, business analysts, and fraud investigators rely on Arbutus to enhance their testing, analysis and compliance capabilities.

Toll free: 877.333.6336

Phone: 604.437.7873

Sales Inquiries

info@ArbutusSoftware.com

Technical Support

support@ArbutusSoftware.com

Arbutus 9
Let's get started!

Software Files
Download Now

 **ARBUTUS**
Powerful Analytics Simplified